

An effective aid in the prevention and treatment of pressure ulcers

**REORDER CODES**

Repose® Double Mattress Overlay

1x Repose Double Mattress Overlay & Pump  
 Product Size: L 1780mm x W 1350mm  
 Order Code: 6131100



**CLEANING INSTRUCTIONS**

**REPOSE CAN BE CLEANED AND REUSED**



REPOSE CAN BE CLEANED WITH SOAP OR DETERGENT AND WATER AND CAN BE DISINFECTED IN ACCORDANCE WITH LOCAL INFECTION CONTROL POLICY FOR STANDARD MATTRESSES.

ALCOHOL & PHENOL BASED DISINFECTANTS SHOULD NOT BE USED ALLOW TO DRY BEFORE USE OR STORAGE.

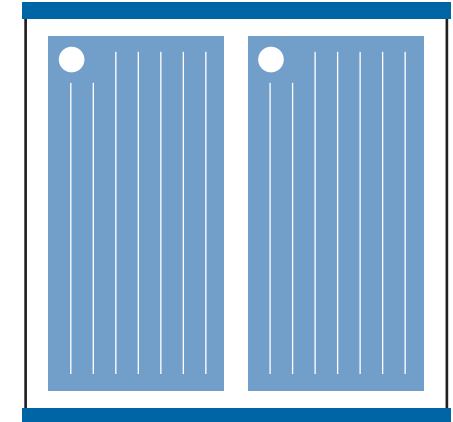
REPOSE IS SUPPLIED WITH A MANUFACTURERS WARRANTY FOR 12 MONTHS FROM DATE OF DISPATCH

FOR FURTHER INFORMATION VISIT [www.reposedirect.com](http://www.reposedirect.com)

**IMPORTANT NOTICE**

CHECK PRODUCT DAILY TO ENSURE CORRECT INFLATION LEVEL IN CASE OF DOUBT, REPEAT PUMPING PROCEDURES WITH THE PATIENT OFF THE PRODUCT

CE REPOSE WORLD WIDE PATENT PENDING  
 FLAME RETARDANT - COMPLIES WITH BS7175 AND BS7177 IGNITABILITY SOURCE CRIB 5



Repose Double Mattress Overlay

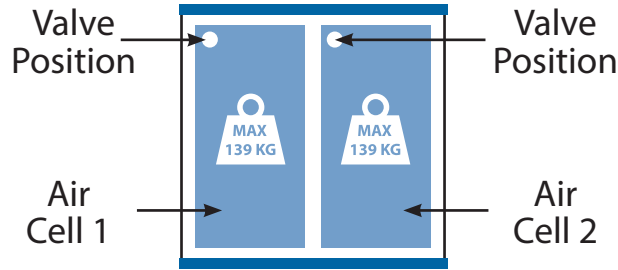
**Repose Double Mattress Overlay User Instructions**



**Frontier Therapeutics Limited**  
 Newbridge Road Industrial Estate  
 Blackwood, South Wales NP12 2YN  
 Tel: +44 (0)1495 235800  
 Fax: +44 (0)1495 235808  
 Email: [info@frontiermedical.eu](mailto:info@frontiermedical.eu)  
[www.frontiermedical.eu](http://www.frontiermedical.eu)

## Quick Start Guide

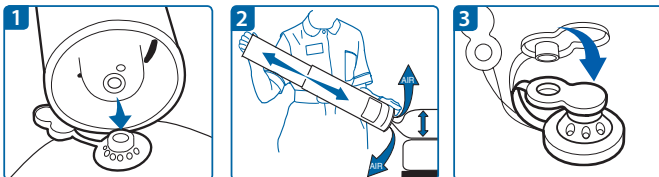
- 1 Inflate the first Air Cell**
- 2 Inflate the second Air Cell**



- 3 Secure Repose Double Mattress Overlay to a double bed.**

## To Inflate

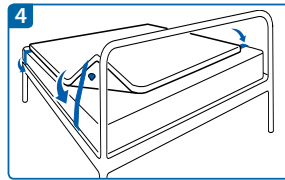
- Remove the Repose Double Mattress overlay and pump from the box.
- Connect the valve on the pump to the valve on the first air cell - Push to fit (See fig. 1).
- Inflate the first cell until you hear air exhausting from the pump valve. Discontinue pumping and wait until you no longer hear air escaping (See fig. 2).
- Disconnect from pump. Cover the valve on the first cell using the solid end of the valve cap (See fig. 3).



- Then repeat the process on the second air cell.
- Turn over with both valves underside and away from user.

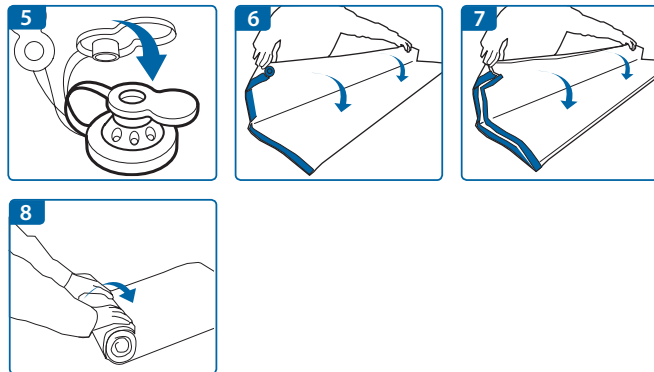
## Fitting Instructions

- Ensure that the Repose Double Mattress is positioned correctly with both valves facing away from the user before securing.
- Secure the fixing straps around the double mattress, looping around the bed mattress (See fig. 4).



## To Deflate

- Insert the open end of the valve cap into both the double mattresses overlay valves. Air can now escape (See fig. 5).
- Fold the mattress in half, then in half again. Roll up the mattress starting at the point furthest away from the valves until all air is expelled. (See fig. 6-8).
- Replace the double mattress overlay into the box with the pump.



## LIMITATIONS FOR USE

**ONLY TO BE USED WITH DOUBLE MATTRESS NOT TO BE USED AS A SLING OR A FLOTATION DEVICE.**

**MAXIMUM USER WEIGHT 139KG (22 STONE) PER AIR CELL**

## IMPORTANT NOTICE

**REPOSE DOUBLE MATTRESS OVERLAY CAN BE CLEANED AND REUSED. REPLACE IF PRODUCT IS DAMAGED OR THREADBARE.**

**CHECK PRODUCT REGULARLY TO ENSURE CORRECT INFLATION LEVEL. IN CASE OF DOUBT, REPEAT PUMPING PROCEDURE WITH THE USER OFF THE PRODUCT.**

**KEEP AWAY FROM SOURCES OF DIRECT HEAT (INCLUDING CIGARETTES), AND SHARP OBJECTS (ESPECIALLY PETS' CLAWS) THAT MAY CAUSE A PUNCTURE.**

**POSITION ON THE DOUBLE BED SHOULD BE CHECKED REGULARLY TO ENSURE THE CORRECT AND SAFE USE.**

**FOR FURTHER INSTRUCTIONS AND INFORMATION, SEE PUMP.**

**IF DETERIORATION IN SKIN CONDITION IS NOTED, CLINICAL ADVICE SHOULD BE SOUGHT AND IF SO ADVISED, DISCONTINUE USE OF PRODUCT.**

**WHEN DEFLATED KEEP AWAY FROM BABIES AND SMALL CHILDREN.**