

## Repose<sup>®</sup> Wedge

Order Code: 6711110

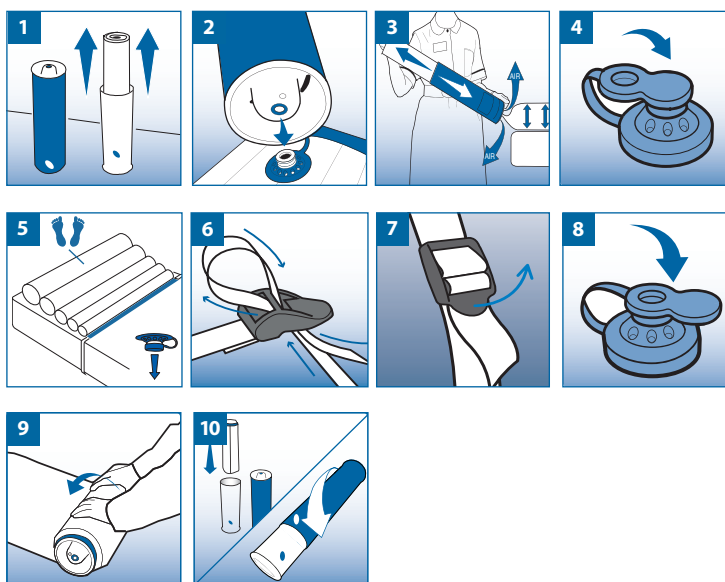


Designed to aid positioning and to off-load pressure from the heels

Repose is an effective aid in the prevention of pressure ulceration for all patients including those assessed as very high risk, and for the treatment of existing pressure ulcers. Clinical supervision is advised if damage is severe.

### To Inflate

- 1 Remove the Wedge from the tube and refit the two tubes together to form a pump.
- 2 Connect the valve on the pump to the valve on the Wedge - Push to fit.
- 3 Inflate until you hear air exhausting from the pump valve. Discontinue pumping and wait until you no longer hear air escaping.
- 4 Cover the valve on the Wedge using the solid end of the valve cap.
- 5 Turn Wedge over with valve underside and away from patient. Place straps as shown.  
Place Wedge underneath bed sheet or equivalent
- 6 Fasten strap as shown.



### To Deflate

- 7 Release strap as shown.
- 8 Insert the open end of the valve cap into the Wedge valve. Air can now escape.
- 9 Fold, and roll up the Wedge starting at the point furthest away from the valve until all air is expelled. Clean, and allow to dry.
- 10 Re-fold, and re-roll as tightly possible and replace inside pump.

#### Please note, Repose Wedge is not suitable for the following:

- Not to be used as a cushion
- Persons with unstable spinal fractures
- Where body shape or limb cannot be fully supported by Repose Wedge

#### REPOSE CAN BE CLEANED AND REUSED



WIPE CLEAN



DO NOT DRY CLEAN



DO NOT TUMBLE DRY



DO NOT IRON

REPOSE CAN BE CLEANED WITH SOAP OR DETERGENT AND WATER AND CAN BE DISINFECTED IN ACCORDANCE WITH THE INFECTION CONTROL POLICY. FOR STANDARD MATTRESSES RINSE WITH CLEAN WATER AFTER USING DISINFECTANT. ALLOW TO DRY BEFORE USE OR STORAGE. REPOSE IS SUPPLIED WITH A MANUFACTURERS WARRANTY FOR 12 MONTHS FROM DATE OF DISPATCH

#### IMPORTANT NOTICE

CHECK PRODUCT DAILY TO ENSURE CORRECT INFLATION LEVEL IN CASE OF DOUBT, REPEAT PUMPING PROCEDURES WITH THE PATIENT OFF THE PRODUCT. KEEP AWAY FROM SHARP OBJECTS AND DIRECT HEAT.

Check device daily to ensure proper inflation level. In case of doubt, repeat inflation procedure with the patient off the product. Keep away from babies, small children and pets. Avoid contact with heat and sharp objects.

If deterioration in skin condition is noted, seek clinical advice. Latex Free.