

repose[®]

Contur

Repose Contur, riser recliner
pressure redistribution overlay



**Repose Contur
Users Instructions**



An effective aid in the prevention
and treatment of pressure ulcers

REORDER CODES

Repose[®] Contur

1x Contur Inflatable Inner Section

Order Code: 6300003

Repose[®] Contur & Contur Cover

1x Contur Inflatable Inner Section & 1x Contur Cover

Order Code: 6300001

Repose[®] Contur & 2 Contur Cover

1x Contur Inflatable Inner Section & 2x Contur Cover

Order Code: 6300002

Repose[®] Contur Cover

1x Contur Cover

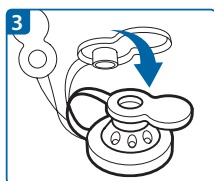
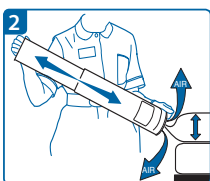
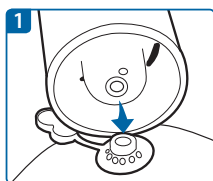
Order Code: 6300000

Quick Start Guide

- 1** Inflate Inflatable Inner Section
- 2** Insert Inflatable Inner Section into Contur Cover
- 3** Secure Repose Contur to Chair

To Inflate

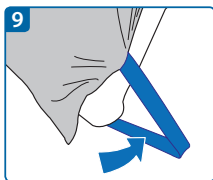
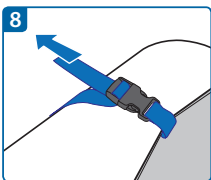
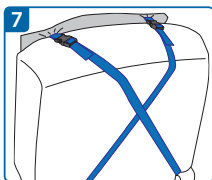
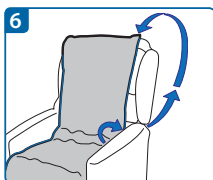
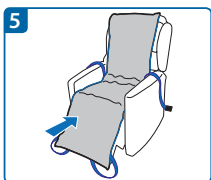
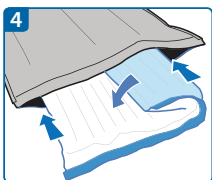
- Remove the Repose Contur inflatable inner section from the tube, refit the two tubes together to form a pump.
- Connect the valve on the pump to the valve on the device - Push to fit (See fig. 1).
- Inflate Repose Contur inflatable inner section until you hear air exhausting from the pump valve. Discontinue pumping and wait until you no longer hear air escaping (See fig. 2).
- Disconnect from pump. Cover the valve on the device using the solid end of the valve cap (See fig. 3).
- Turn over with valve underside and away from user.



Fitting Instructions

- Lay Contur cover out with fixing straps beneath.
- Fold the Repose Contur inflatable inner section lengthways, insert into Contur cover and lay flat with valve face down at head end. (See fig. 4) Close zip at both ends.
- Ensure that the Repose Contur is positioned correctly before securing. (See fig. 5)

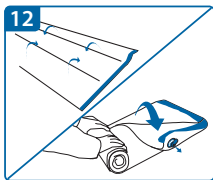
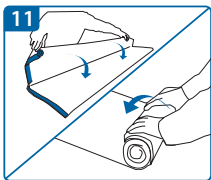
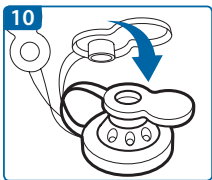
- Insert fixing straps between the seat and arm rest, looping around the back of the chair. (See fig. 6)
- Cross fixing straps as shown. (See fig. 7)
- Clip the fixing straps into place and adjust until secure. (See fig. 8)
- Loop bottom fixing straps around either side of the foot rest until secure. (See fig. 9)



To Deflate

- Insert the open end of the valve cap into the device valve. Air can now escape (See fig. 10).
- Fold and roll up the device starting at the point furthest away from the valve until all air is expelled. (See fig. 11).
- Re-fold, and re-roll as tightly as possible (See fig. 12).
- Replace device into the pump. Refit the two tubes together and rotate outer tube until it clicks closed.

FOR MORE INFORMATION - PLEASE SEE THE REPOSE CONTUR INFLATABLE INNER SECTION INSTRUCTIONS, INCLUDED WITHIN THE PUMP.



LIMITATIONS FOR USE

REPOSE CONTUR COVER IS ONLY TO BE USED WITH REPOSE CONTUR INFLATABLE INNER SECTION.

ONLY TO BE USED WITH RISER RECLINER CHAIRS WITH ARMS NOT TO BE USED AS A SLING OR A FLOTATION DEVICE.

MAXIMUM USER WEIGHT 139KG (22 STONE)

PRECAUTIONS

REPOSE CONTUR CAN BE CLEANED AND REUSED. REPLACE IF PRODUCT IS DAMAGED OR THREADBARE.

CHECK PRODUCT REGULARLY TO ENSURE CORRECT INFLATION LEVEL. IN CASE OF DOUBT, REPEAT PUMPING PROCEDURE WITH THE USER OFF THE PRODUCT.

KEEP AWAY FROM SOURCES OF DIRECT HEAT (INCLUDING CIGARETTES), AND SHARP OBJECTS (ESPECIALLY PETS' CLAWS) THAT MAY CAUSE A PUNCTURE.

POSITION ON THE CHAIR SHOULD BE CHECKED REGULARLY TO ENSURE THE CORRECT AND SAFE USE.

FOR FURTHER INSTRUCTIONS AND INFORMATION, SEE PUMP.

IF DETERIORATION IN SKIN CONDITION IS NOTED, CLINICAL ADVICE SHOULD BE SOUGHT AND IF SO ADVISED, DISCONTINUE USE OF PRODUCT.

WHEN DEFLATED KEEP AWAY FROM BABIES AND SMALL CHILDREN.

IMPORTANT NOTICE

ONLY USE REPOSE CONTUR OVERLAY WITH REPOSE CONTUR COVER.

REPOSE CONTUR CAN BE CLEANED AND REUSED.

CHECK PRODUCT REGULARLY TO ENSURE CORRECT INFLATION LEVEL. IN CASE OF DOUBT, REPEAT PUMPING PROCEDURE WITH THE USER OFF THE PRODUCT.

KEEP AWAY FROM SOURCES OF DIRECT HEAT (INCLUDING CIGARETTES), AND SHARP OBJECTS (ESPECIALLY PETS' CLAWS) THAT MAY CAUSE A PUNCTURE.

MAXIMUM USER WEIGHT 139KG (23 STONE).

POSITION ON THE CHAIR SHOULD BE CHECKED REGULARLY TO ENSURE THE CORRECT AND SAFE USE.

REPOSE CONTUR COVER IS ONLY TO BE USED WITH REPOSE CONTUR INFLATABLE INNER SECTION.

ONLY TO BE USED WITH RISER RECLINER CHAIRS WITH ARMS. NOT TO BE USED AS A SLING OR A FLOTATION DEVICE.

FOR FURTHER INSTRUCTIONS AND INFORMATION, SEE PUMP.

REPLACE IF PRODUCT IS DAMAGED OR THREADBARE.

CLEANING INSTRUCTIONS

1 REPOSE CONTUR INFLATABLE INNER SECTION



WIPE CLEAN



DO NOT
DRY CLEAN



DO NOT
TUMBLE DRY



DO NOT
IRON

REPOSE CAN BE CLEANED WITH SOAP OR DETERGENT AND WATER AND CAN BE DISINFECTED IN ACCORDANCE WITH LOCAL INFECTION CONTROL POLICY. ALLOW TO DRY BEFORE USE OR STORAGE.

2 REPOSE CONTUR COVER



HAND WASH



LAUNDRY



DO NOT
DRY CLEAN



DO NOT
TUMBLE DRY



DO NOT
IRON

REMOVE INFLATABLE SECTION PRIOR TO WASHING. OPEN ZIPS AT BOTH ENDS AND TURN COVER INSIDE OUT. AVOID USE OF BLEACH AND STAIN REMOVERS. ALLOW TO DRY.

FOR FURTHER INFORMATION VISIT
www.reposedirect.com



REPOSE WORLD WIDE PATENT PENDING
FLAME RETARDANT - COMPLIES WITH BS7175 AND
BS7177 IGNITABILITY SOURCE CRIB 5

Instructions apply to the following products:

6300001 6300002 6300003 6310001 6310002



Frontier Therapeutics Limited
Newbridge Road Industrial Estate
Blackwood, Caerphilly, South Wales
NP12 2YN

Tel: +44 (0)1495 235800

Fax: +44 (0)1495 235808

Email: info@frontier-group.co.uk

www.frontier-group.co.uk